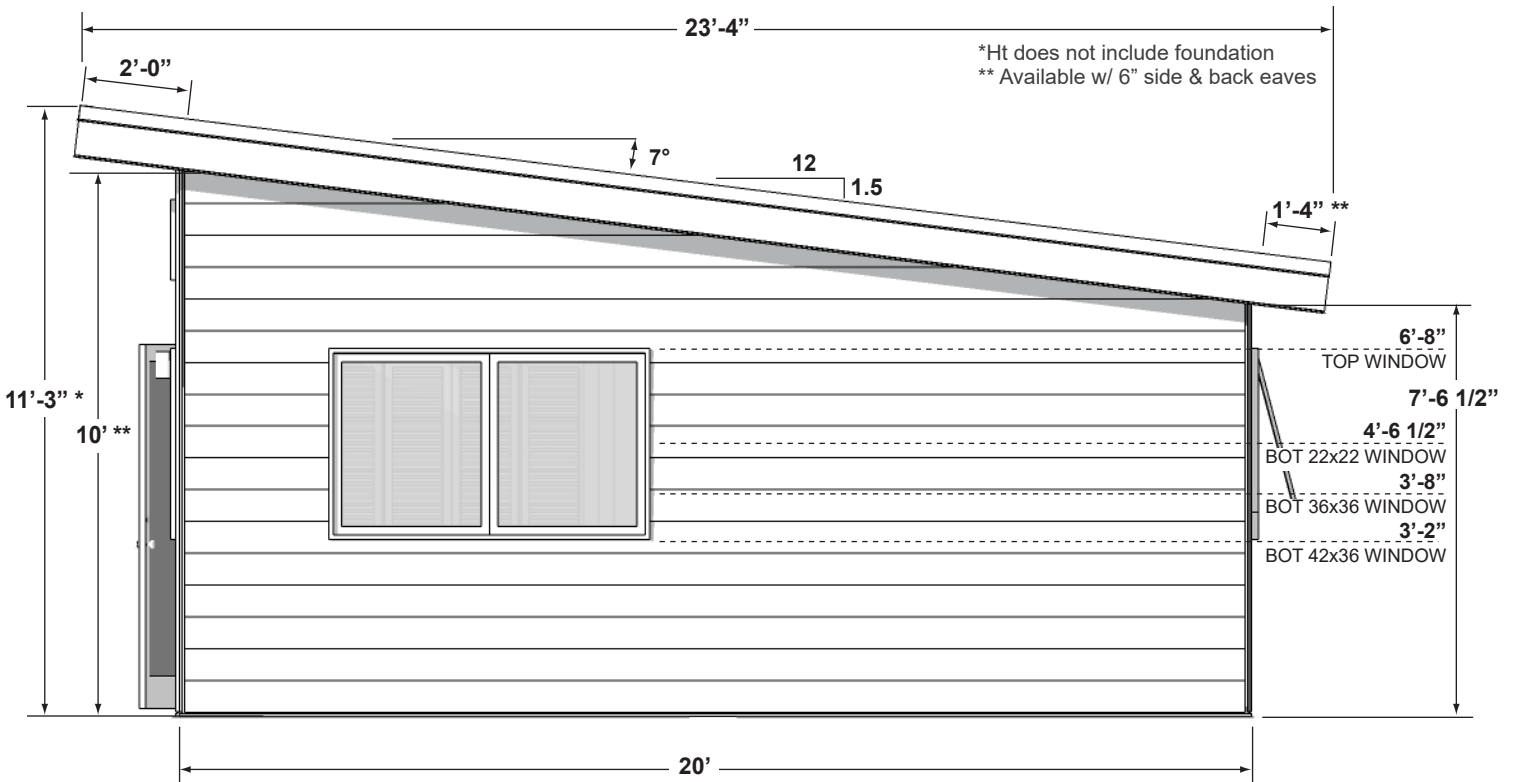
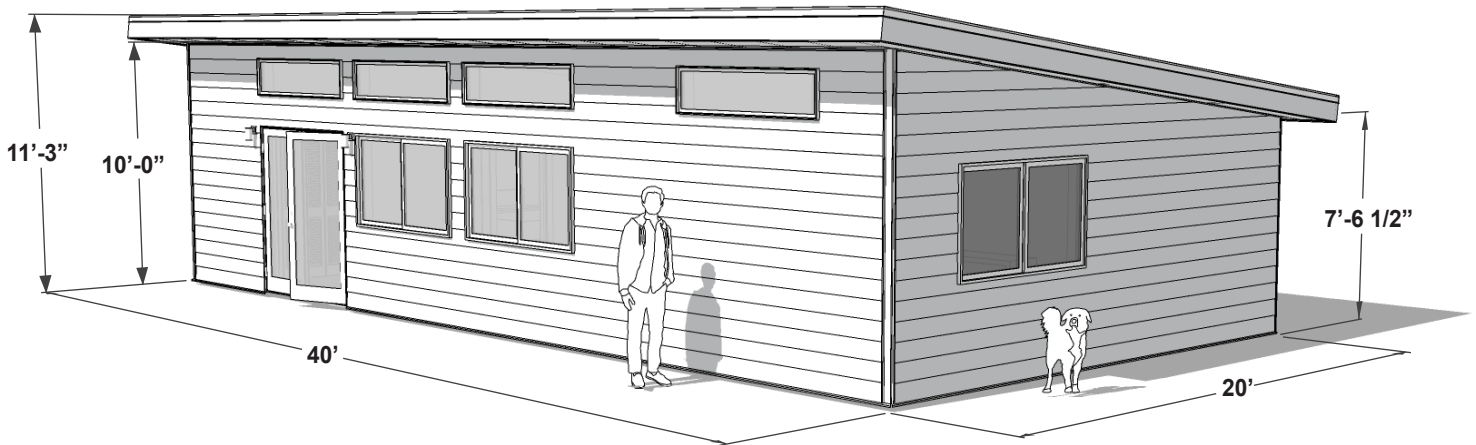
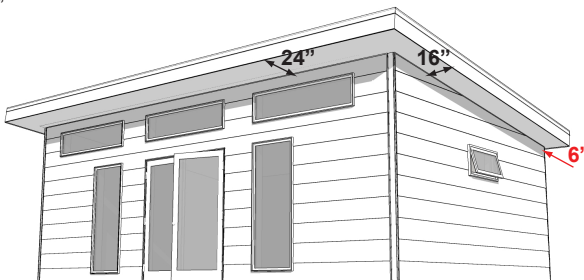


NOTE: All layouts available mirrored (left-right)


SUMMIT SERIES - ROOF UPGRADES
EAVE LENGTHS:

 FRONT = 24"
 SIDE = 16"
 BACK = 6"

SHORTENED BACK EAVES
 RECOMMENDED FOR PLACEMENT NEAR REAR SET-BACK

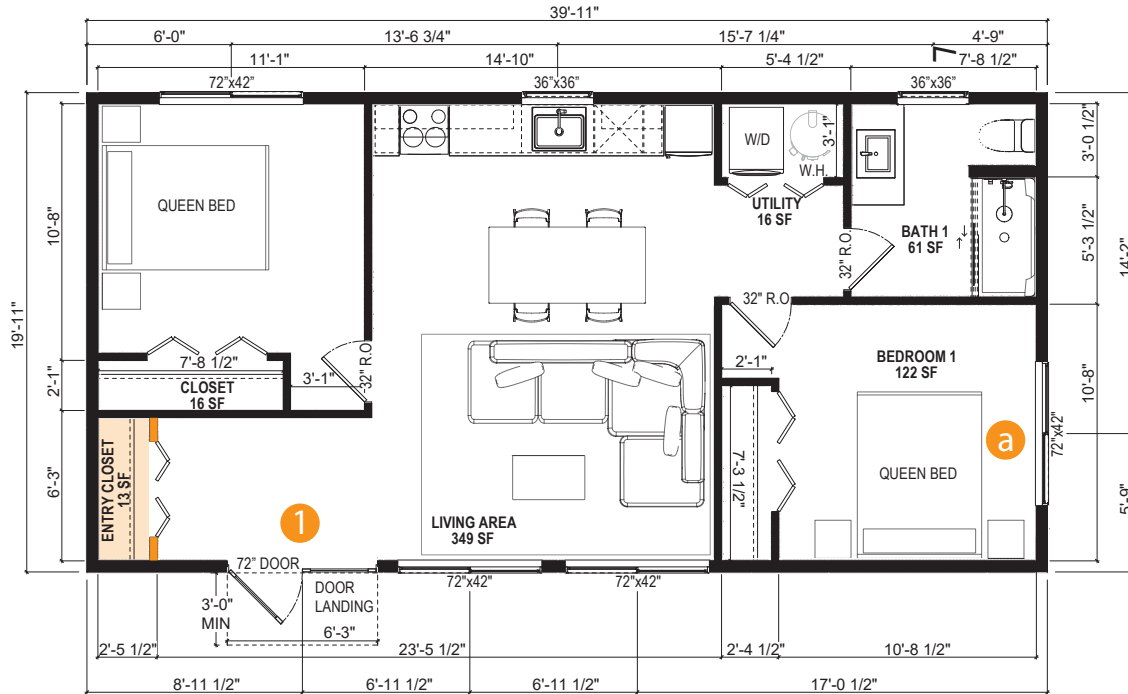
EAVE LENGTHS:

 FRONT = 24"
 SIDE = 6"
 BACK = 6"

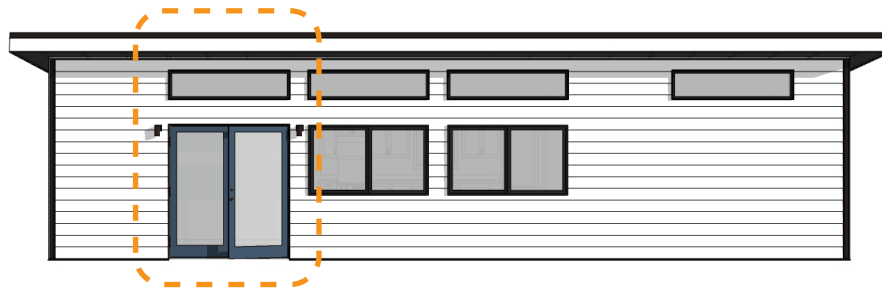
SHORTENED BACK AND SIDE EAVES
 RECOMMENDED FOR PLACEMENT NEAR REAR & SIDE SET-BACKS

1 MODEL (B) - FLOOR PLAN (1) SINGLE BATH
 SCALE: 1/8" = 1'-0" (8.5x11 PAPER)

NOTE: Dimensions shown to framing and center of fenestration



SUMMIT 800 - MODEL B - 1 - FRONT DOOR



1 72" FRONT DOOR

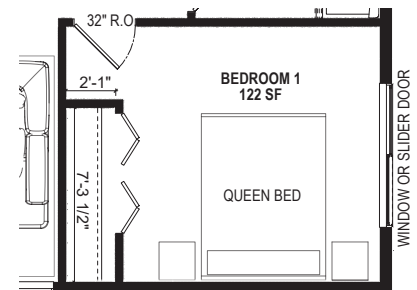
SUMMIT 800 - MODEL B - 1 - BEDROOM OPTION



a 72" GLIDER WINDOW

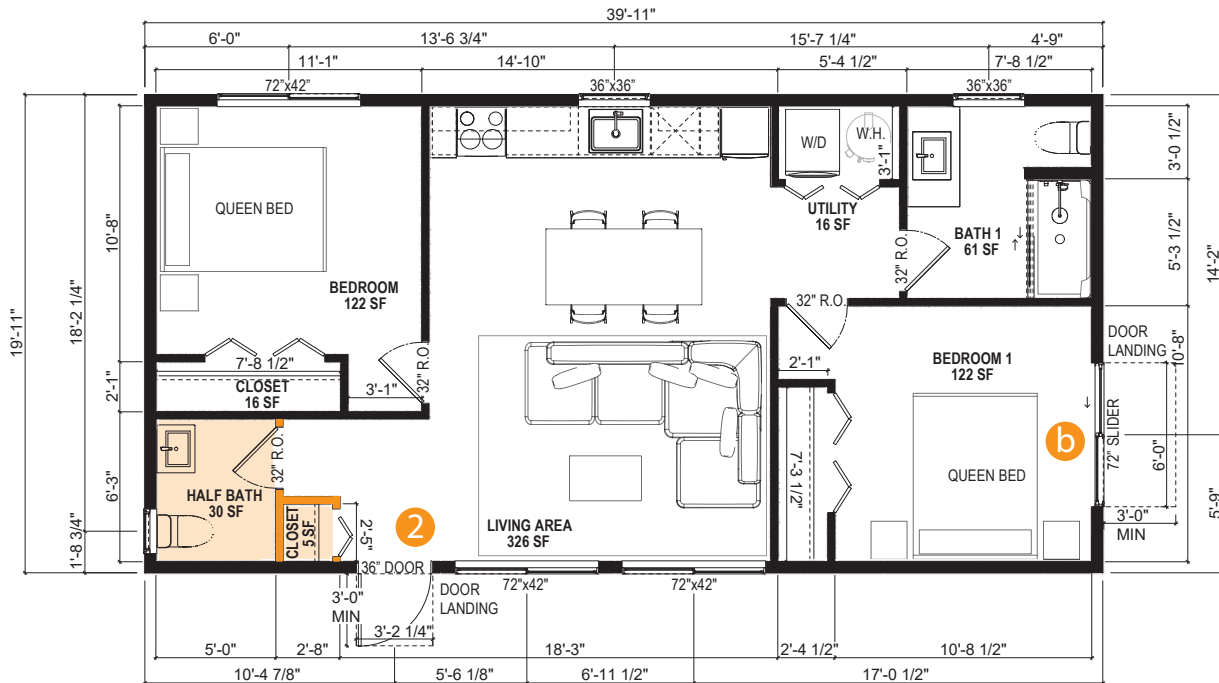
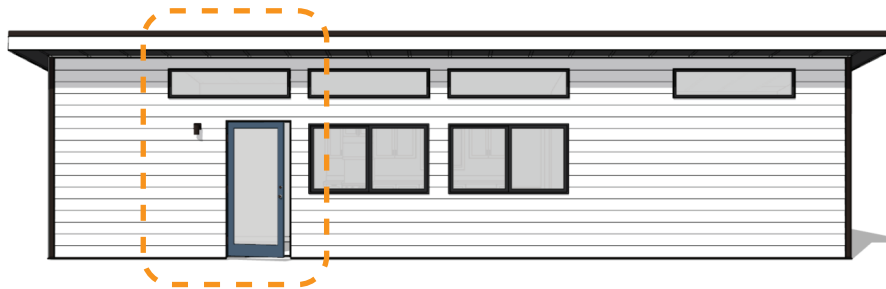


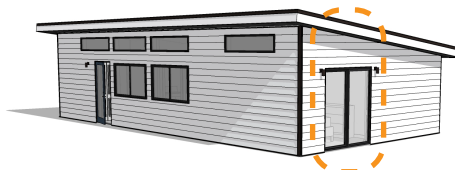
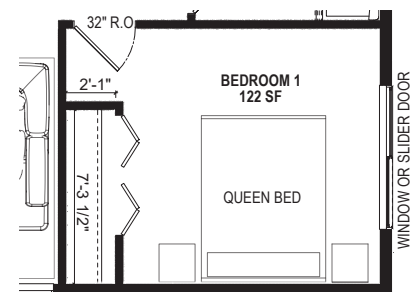
b 72" SLIDER DOOR



2 MODEL (B) - FLOOR PLAN (2) ADD HALF BATH
 SCALE: 1/8" = 1'-0" (8.5x11 PAPER)

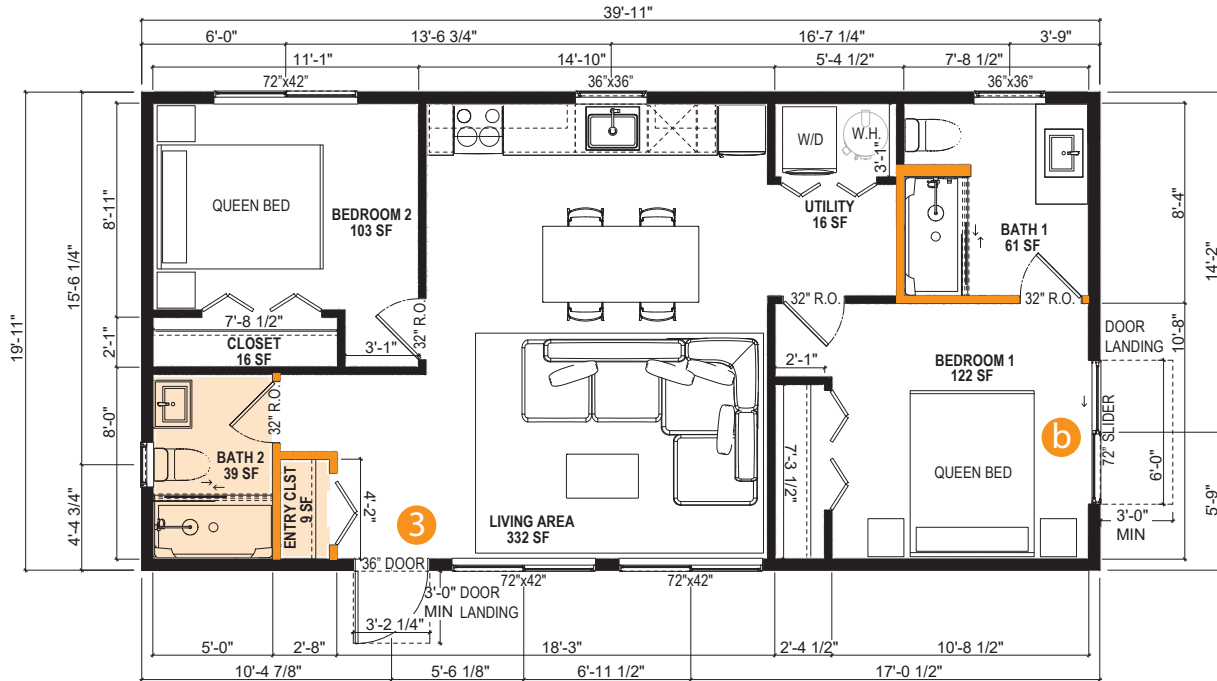
NOTE: Dimensions shown to framing and center of fenestration


SUMMIT 800 - MODEL B - 2 - FRONT DOOR

2 36" FRONT DOOR
SUMMIT 800 - MODEL B - 2 - BEDROOM OPTION

a 72" GLIDER WINDOW

b 72" SLIDER DOOR


3 MODEL (B) - FLOOR PLAN (3) ADD FULL BATH
 SCALE: 1/8" = 1'-0" (8.5x11 PAPER)

NOTE: Dimensions shown to framing and center of fenestration



SUMMIT 800 - MODEL B - 3 - FRONT DOOR

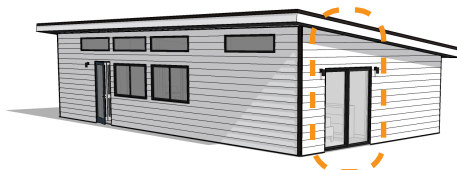


3 36" FRONT DOOR

SUMMIT 800 - MODEL B - 3 - BEDROOM OPTION



a 72" GLIDER WINDOW



b 72" SLIDER DOOR

