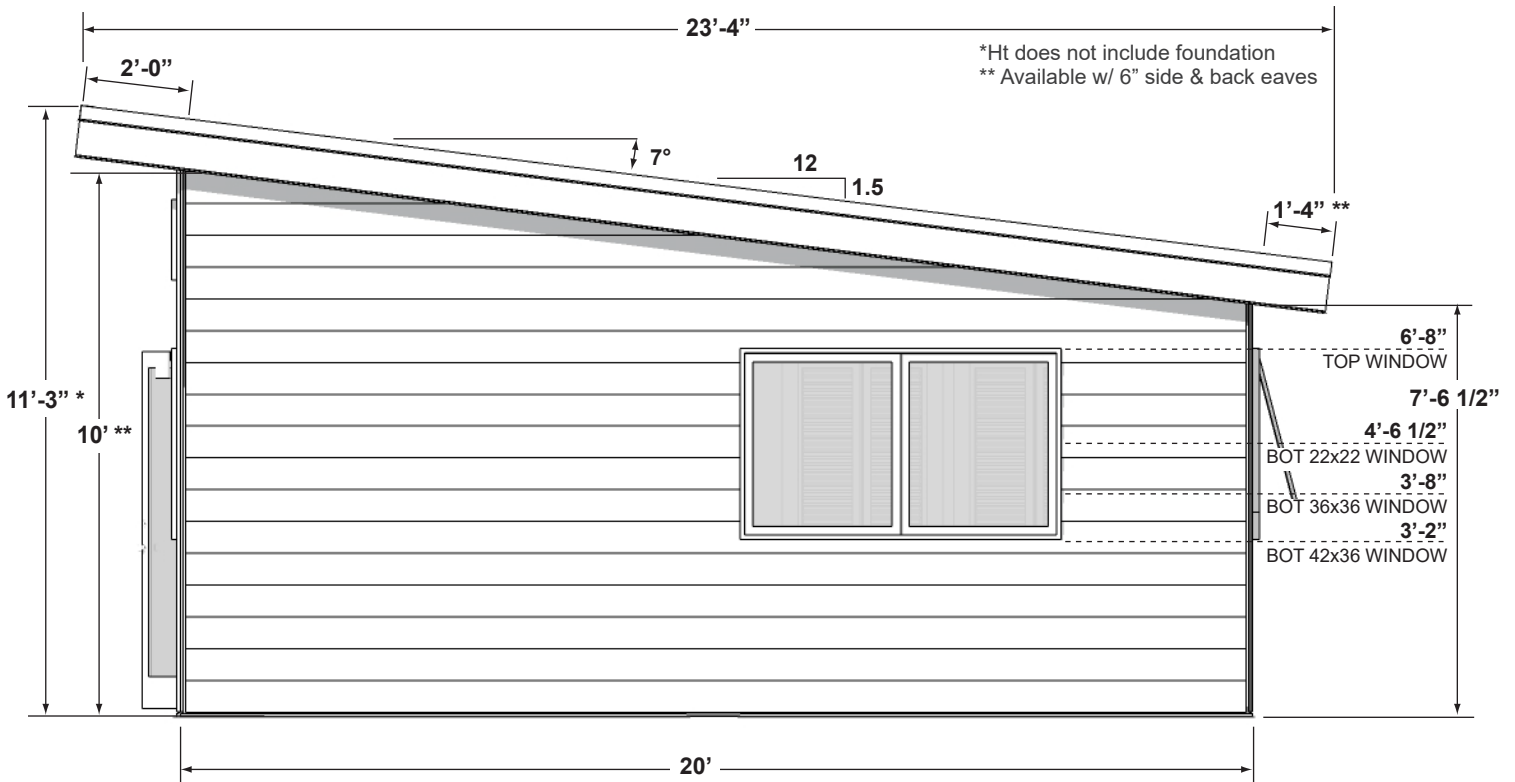
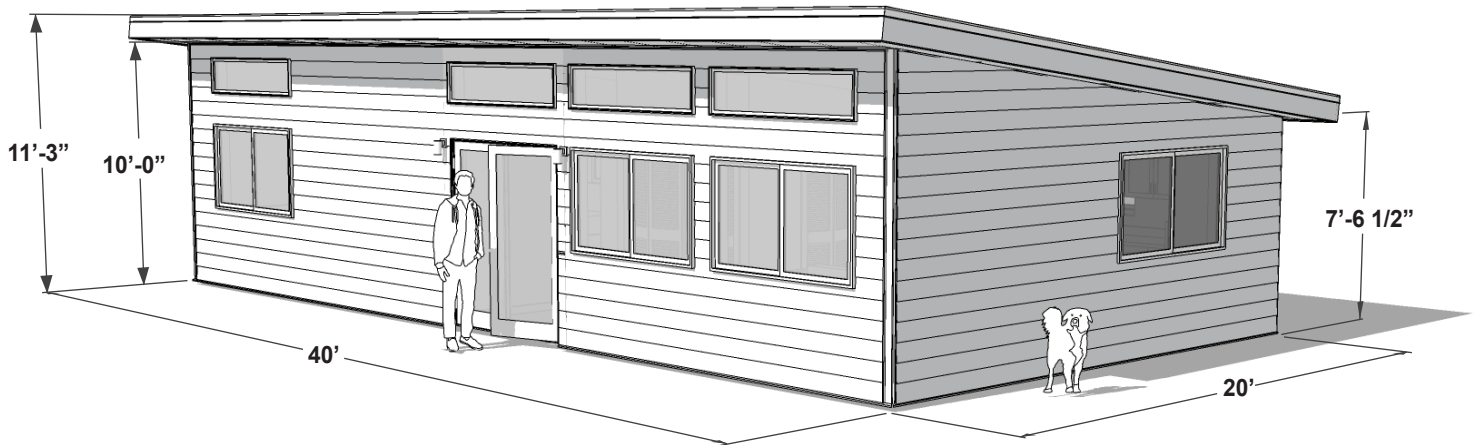
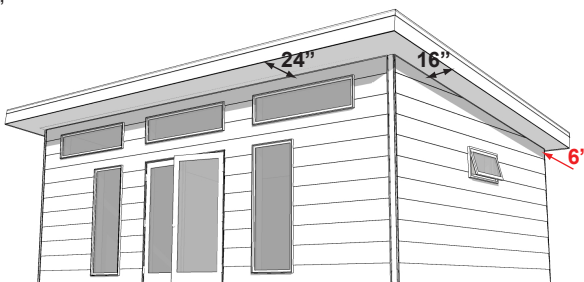


NOTE: All layouts available mirrored (left-right)


**SUMMIT SERIES - ROOF UPGRADES**
**EAVE LENGTHS:**

 FRONT = 24"  
 SIDE = 16"  
 BACK = 6"

**SHORTENED BACK EAVES**  
 RECOMMENDED FOR PLACEMENT NEAR REAR SET-BACK

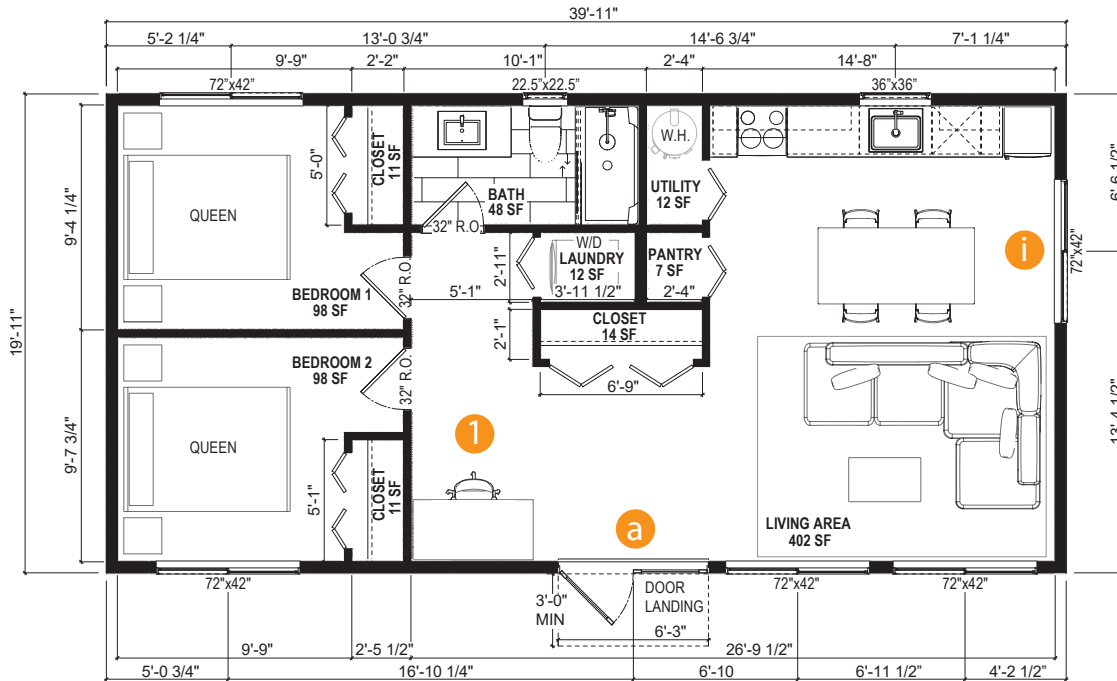
**EAVE LENGTHS:**

 FRONT = 24"  
 SIDE = 6"  
 BACK = 6"

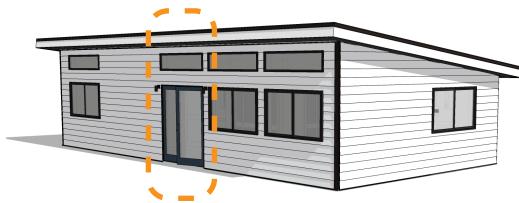
**SHORTENED BACK AND SIDE EAVES**  
 RECOMMENDED FOR PLACEMENT NEAR REAR & SIDE SET-BACKS

**1 MODEL (A) - FLOOR PLAN (1) ONE BATH**  
 SCALE: 1/8" = 1'-0" (8.5x11 PAPER)

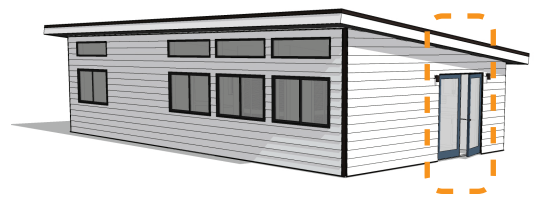
NOTE: Dimensions shown to framing and center of fenestration



**SUMMIT 800 - MODEL A - MAIN ENTRY OPTIONS**

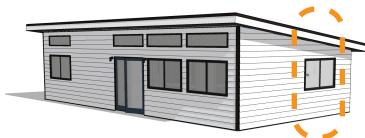


**a** FRONT ENTRY



**b** SIDE ENTRY

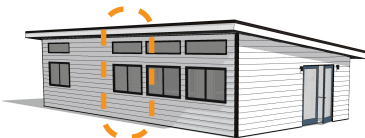
**SUMMIT 800 - MODEL A - SLIDING DOOR OPTIONS**



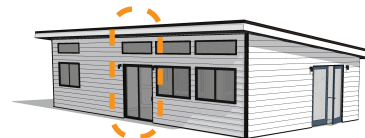
*IF (a) Front Entry selected window opt. on side wall*



*IF (a) Front Entry selected slider door opt. on side wall*



*IF (b) Side Entry selected window opt. on front wall*



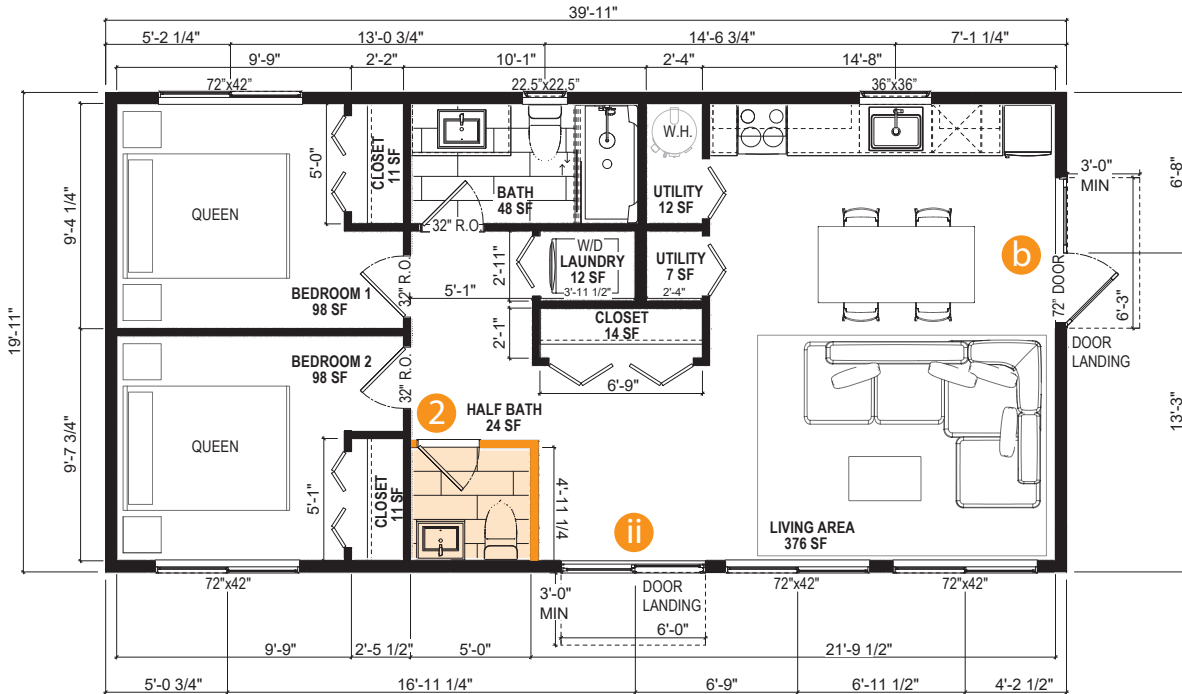
*IF (b) Side Entry selected slider door opt. on front wall*

**i** GLIDER WINDOW

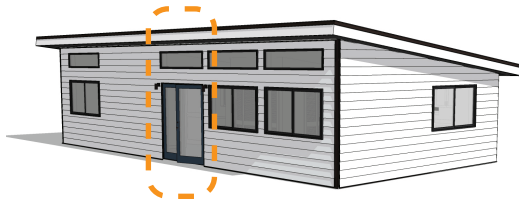
**ii** SLIDER DOOR

**2** MODEL (A) - FLOOR PLAN (2) ADD HALF BATH  
 SCALE: 1/8" = 1'-0" (8.5x11 PAPER)

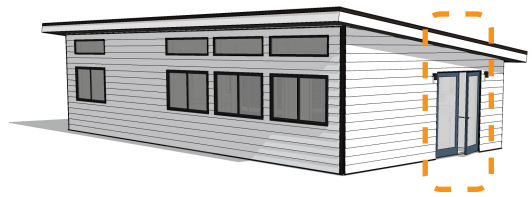
NOTE: Dimensions shown to framing and center of fenestration



SUMMIT 800 - MODEL A - MAIN ENTRY OPTIONS

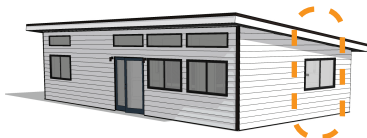


**a** FRONT ENTRY



**b** SIDE ENTRY

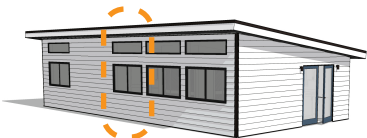
SUMMIT 800 - MODEL A - SLIDING DOOR OPTIONS



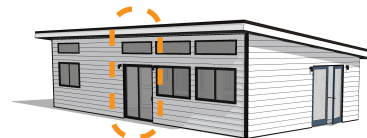
IF (a) Front Entry selected window opt. on side wall



IF (a) Front Entry selected slider door opt. on side wall



IF (b) Side Entry selected window opt. on front wall



IF (b) Side Entry selected slider door opt. on front wall

**i** GLIDER WINDOW

**ii** SLIDER DOOR