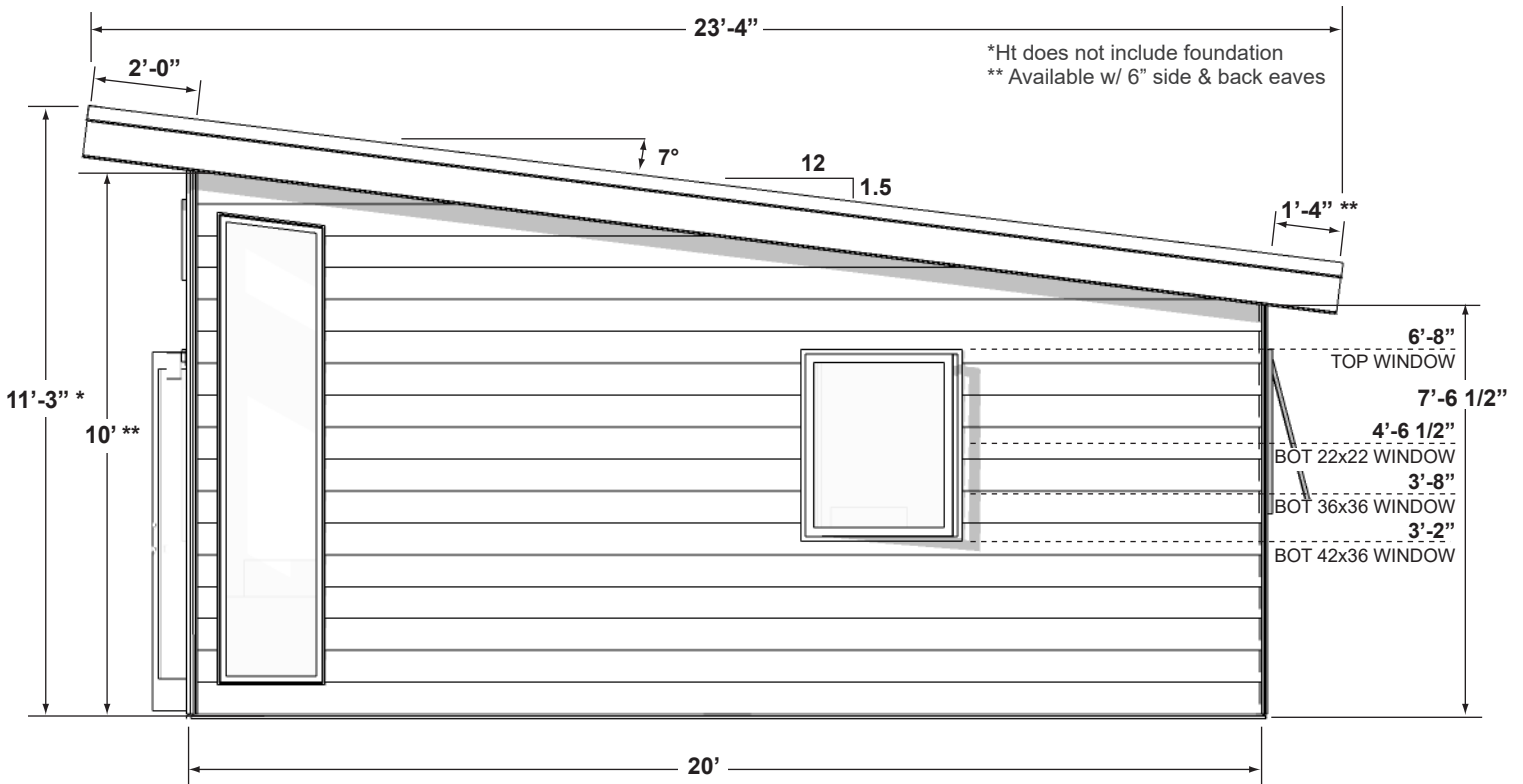
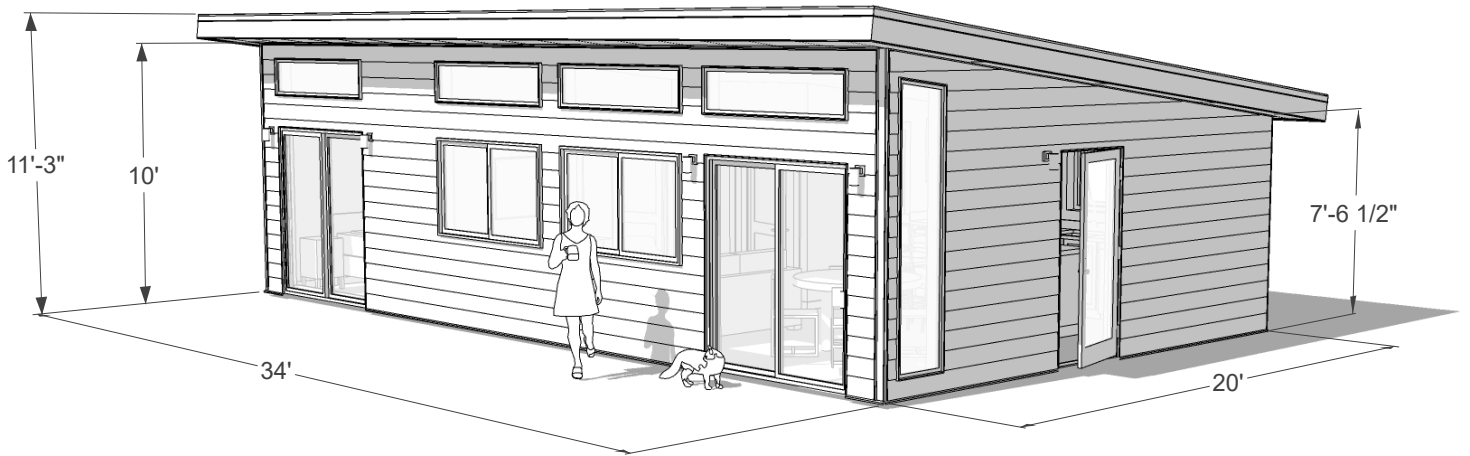
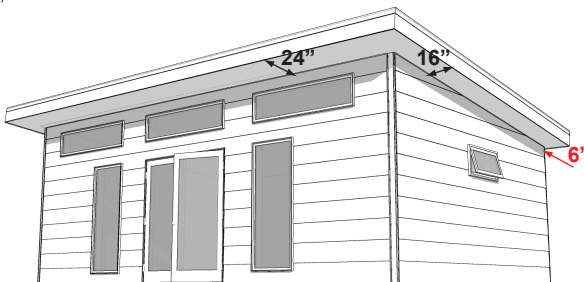


NOTE: All layouts available mirrored (left-right)


SUMMIT SERIES - ROOF UPGRADES
EAVE LENGTHS:

 FRONT = 24"
 SIDE = 16"
 BACK = 6"

SHORTENED BACK EAVES
 RECOMMENDED FOR PLACEMENT NEAR REAR SET-BACK

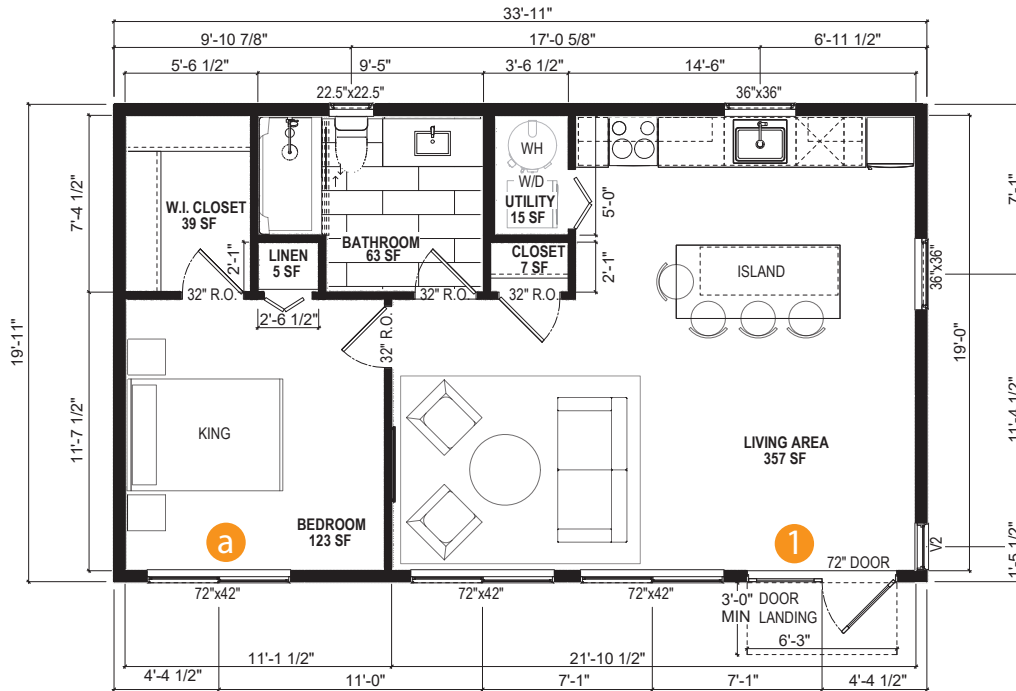
EAVE LENGTHS:

 FRONT = 24"
 SIDE = 6"
 BACK = 6"

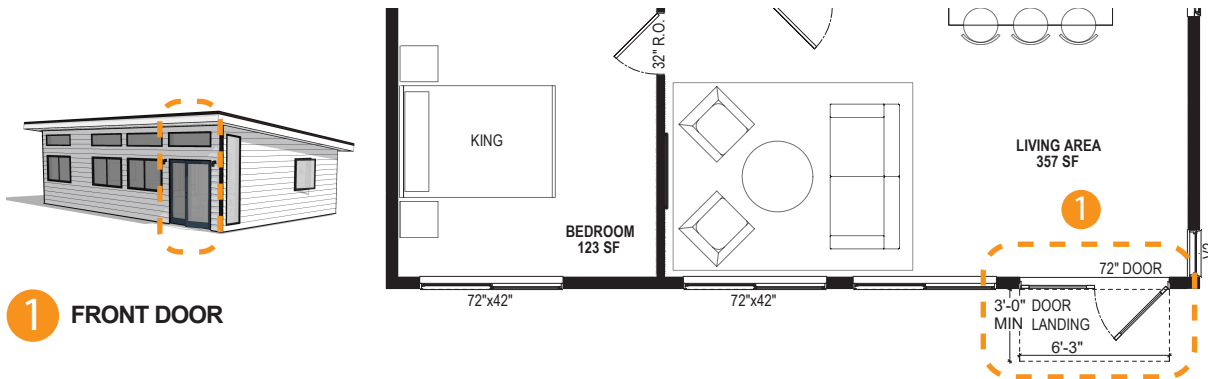
SHORTENED BACK AND SIDE EAVES
 RECOMMENDED FOR PLACEMENT NEAR REAR & SIDE SET-BACKS

A MODEL (A) LARGER LIVING - (1)
 SCALE: 1/8" = 1'-0" (8.5x11 PAPER)

NOTE: Dimensions shown to framing and center of fenestration



SUMMIT 680 - MODEL A - 1 - MAIN ENTRY



SUMMIT 680 - MODEL A - 1 - SLIDING DOOR OPTION



IF (1) Front Door selected window option in bedroom



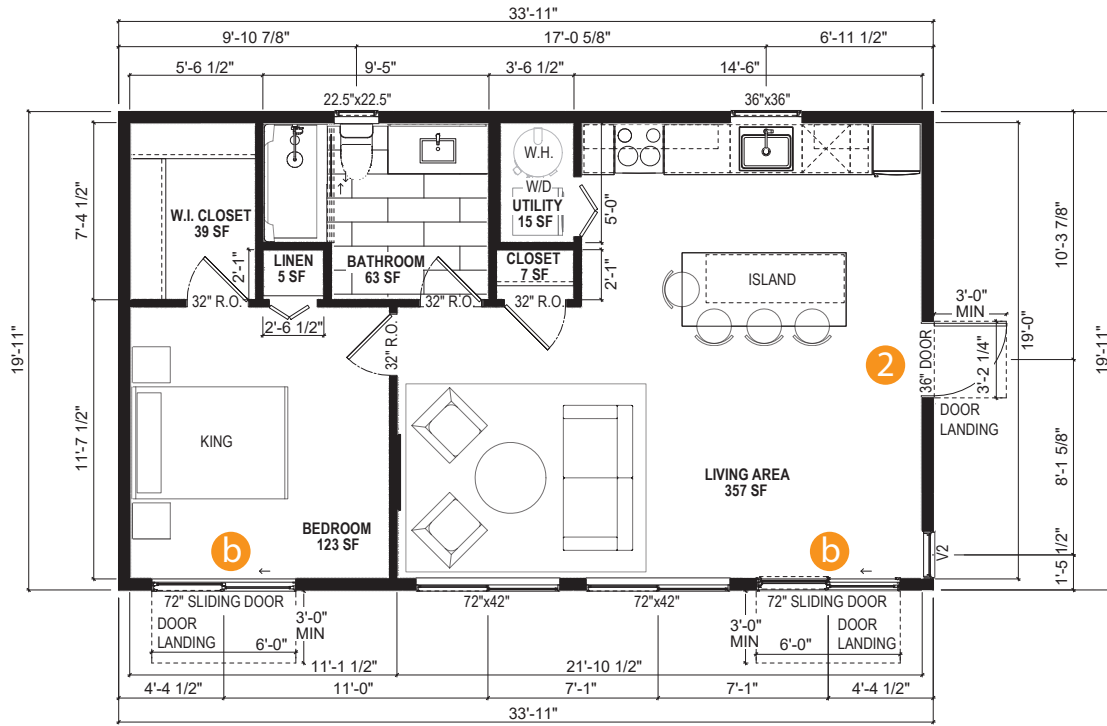
IF (1) Front Door selected slider door option in bedroom

a BEDROOM WINDOW

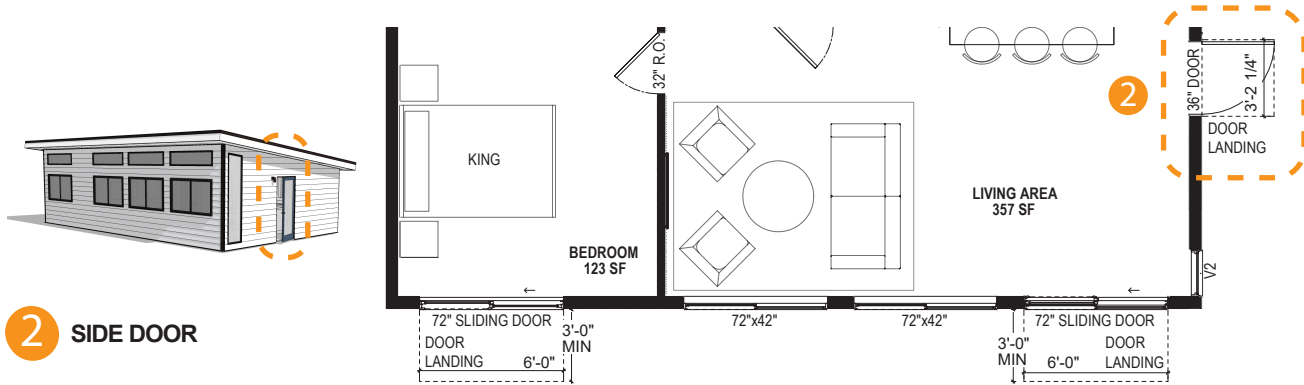
b BEDROOM SLIDER DOOR

A MODEL (A) LARGER LIVING - (2)
 SCALE: 1/8" = 1'-0" (8.5x11 PAPER)

NOTE: Dimensions shown to framing and center of fenestration



SUMMIT 680- MODEL A - 2 - MAIN ENTRY



SUMMIT 680 - MODEL A - 2 - SLIDING DOOR OPTION

